



# Multi Gardens

*Multi Professionals Cooperative Housing Society*





Islamabad is considered as one of the most beautiful capital city of the world. It is professionally and competently planned with wide roads, avenues, fly-overs and underpasses, elegant public buildings, well organized shopping centers leading to groom the real estate industry.



## Introduction

Multi Professionals is a Co-operative Housing Society (MPCHS) registered with the Deputy Commissioner / Registrar Cooperatives ICT, Islamabad vide Registration No. 316 dated 14th November, 1988 and is governed by the Laws and Bye-Laws of the Society approved by the Registrar.



## Projects Delivered



**Islamabad Gardens**  
CDA Sector E-11/1  
Phase-II, Islamabad



**Islamabad Gardens**  
CDA Sector E-11/3  
Phase-I, Islamabad



**Tele Gardens**  
CDA Sector F-17,  
Islamabad



**Residencia & Orchards**  
Farm Housing Project &  
Residential Housing Project

## *Beautiful Homes*



### **A view of E-11/3 Scheme**

The Society launched its first housing project of Islamabad Gardens E-11/3 in 1989 and E-11/1 in 2001 on approval of layout plans and in accordance with the laid down specifications, rules and regulations of the Capital Development Authority (CDA).



### **A view of E-11/1 Scheme**

Quality standards in development work of the Society stands acknowledged at all relevant forums particularly by the Standing Committee on Law, Justice, Human Rights and Parliamentary Affairs of the Senate in October 2007 while scrutinizing the working of the Society (MPCHS).



### **A view of B-17 Scheme**

Multi Gardens (CDA Sector B-17) launched in 2004 and spreading over an area of more than 25000 Kanals in the foot of Margalla Hills and on G. T. Road on one side while Motorway (M-1) on the other is yet another remarkable project of the Society. The scheme is planned at ideal location on a professionally designed layout plan with all inbuilt modern amenities and adequate provisions for future needs.

This Sector would be the gateway to Central Asian States, Gilgit Balitstan, Khyber Pakhtoon Khawa (KPK) and China. The alternate incoming route to Islamabad known as Margalla Avenue joins G. T. Road almost in front of Gate No.I, of the Sector. It is a focal point for Islamabad / Rawalpindi, Taxila, Wah Cantt and Hasanabadal and would be at a striking distance from future settlements of value growing briskly in and around.

**B-17, Block C House**



## *Beautiful Homes*



**B-17, Block C**

The layout plan includes provision of basic amenities like state of the art Zoo, Multi Club compatible to the reputed Clubs of the country, quality education, health, socio economic and commercial centres, environment friendly surroundings, sports and cultural facilities. The inhabitants would enjoy the privilege of choice of the facilities available within the Sector and also of adjoining five major cities i.e Islamabad / Rawalpindi, Taxila, Wah Cantt and Hasanabadal.

# Facilities



- Underground Electricity
- Sui Gas
- Water Filtration Plants
- Masajid
- Community Centres
- Police Station
- State of the Art Zoo
- Parks
- Hotels
- Multi Club
- Recreation Centres
- Boundary Wall
- Shopping Malls
- Food Street
- Schools / Colleges
- Universities
- Play Grounds
- Filling Station





**Wide Roads in B-17 Scheme**



**Elements in B-17 Scheme**  
Block - G



**Jamia Masjid Rehmat ul Alameen**  
B-17 Markaz, Block - B



**Elements in B-17 Scheme**  
Block - G

# Prominent Facilities



**Multi Zoo**  
Sector B-17 Scheme  
Block - C



**Jurassic Park**  
Sector B-17 Scheme, Block - C



**Grid Station**  
Sector B-17 Scheme, Block - C



**Masjid Hazrat Ali (R.A)**  
Sector B-17 Scheme, Block-F



**Cricket Ground**  
Sector B-17 Scheme, Block - C





**Element in B-17 Scheme**  
Ijaz Ahmed Khan Avenue



**Element in B-17 Scheme**  
Ijaz Ahmed Khan Avenue



**Element in B-17 Scheme**



**Element in B-17 Scheme**  
Ijaz Ahmed Khan Avenue



**Beautiful House**  
Sector B-17 Scheme  
Block - A



**Beautiful House**  
Sector B-17 Scheme  
Block - A



**Beautiful House**  
Sector B-17 Scheme  
Block - F



**Beautiful House**  
Sector B-17 Scheme  
Block - E



**Commercial Area**  
Sector B-17 Scheme  
Block C-1



**Villas**  
Sector B-17 Scheme  
Block - C-1

**Winston Builders**  
Sector B-17 Scheme



**J7 Emporium**  
Sector B-17 Scheme



**Capital Square**  
Sector B-17 Scheme



# MUHAMMADI ARCADE

**Commercial Area**

Sector B-17 Scheme

Block - B-1



# SAPPHIRE

**G.T Road Commercial Area**

Sector B-17 Scheme

Gate - 1, Block - B



# Multi Club



Multi Club is an exclusive club and shall be affiliated with renowned clubs within and outside Pakistan.

## Main Building

The main club building houses the Reception, Lobby, Main Lounge, Conference Hall, Dining Hall, Multipurpose Hall and a multi-purpose Auditorium.

## Sports Facilities

Club has a full range of sport facilities including Tennis courts, outdoor and indoor swimming pools, state of the art gymnasium, squash courts, badminton courts.

## Others

The club has rooms for comfortable stay of members with spacious car parking area.





## Margalla Avenue Expansion

- The Margalla Avenue or Margalla Expressway is a planned highway of 9 kilometers in the suburbs of Margalla Hills.
- It is an extension of the existing Khayaban-e-Iqbal, which starts from the 4th Avenue (Nur Pur Shahan) and ends at the E-11) Golra sectors in Southeast Islamabad.
- The expressway is an alternative to Kashmir Highway and would provide easy access to the 10th and 11th Sectors of Islamabad to N-5 National Highway.

Margalla Avenue from Sector D-12 to B-17, GT Road (600ft ROW). Likely to complete in near future.

*Extension of Margalla Avenue from GT Road to M-1 approved vide letter No. CDA/PLW-UP. DD-III (163) 05.2668 dated 15-08-2006.*

*600 feet CDA Principal Road to G. T. Road approved by CDA vide letter No.CDA/PLW-D(Staff/2(2)06/335 dated 01-11-2006.*

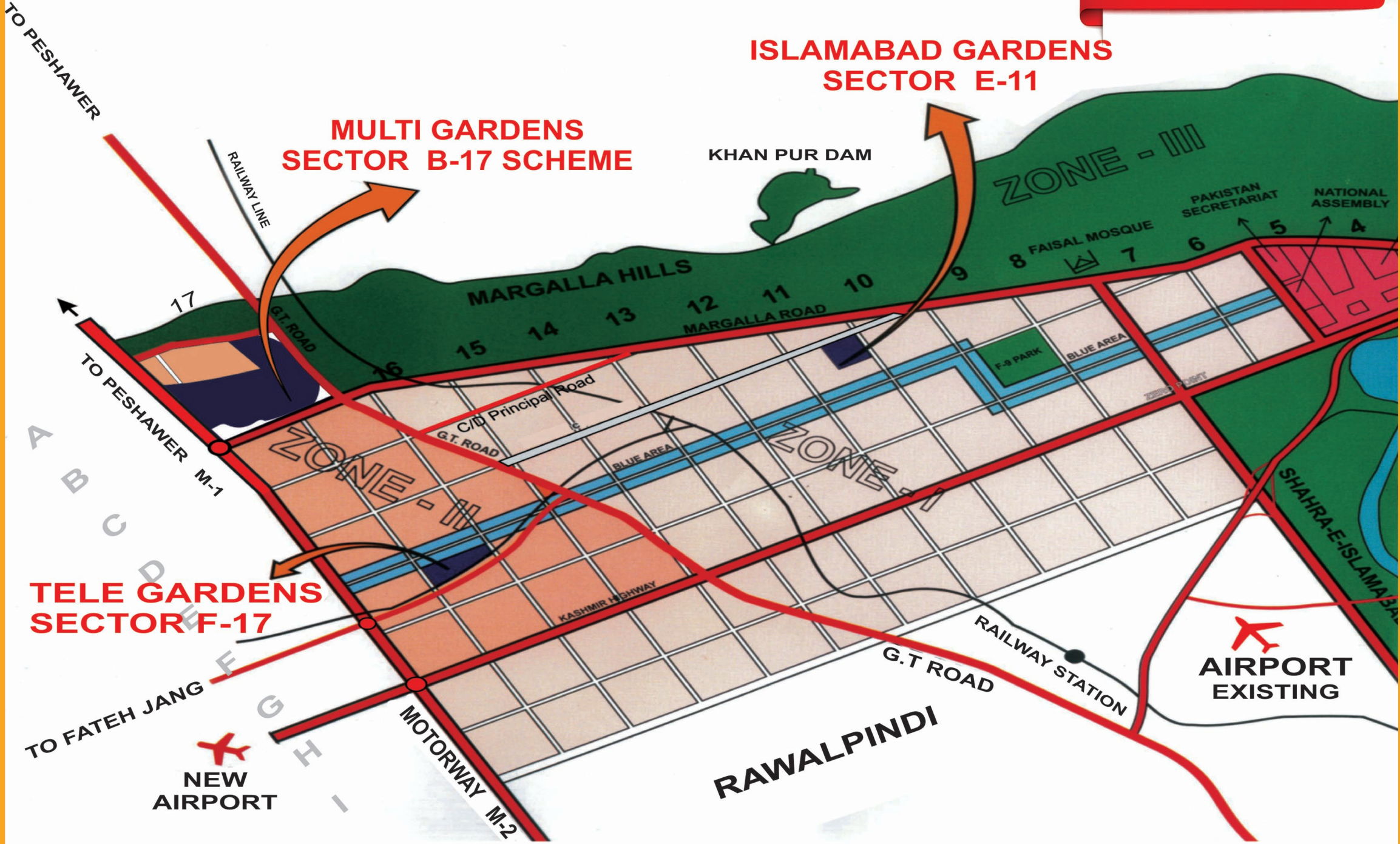


# Master Plan

## ISLAMABAD GARDENS SECTOR E-11

## MULTI GARDENS SECTOR B-17 SCHEME

## TELE GARDENS SECTOR F-17



## *Security of Investment*



MPCHS is registered with Deputy Commissioner / Registrar Cooperatives ICT, Islamabad vide Registration No. 316, dated 13-11-1988 and is governed by the Rules, Regulations and Bye-Laws of the Society formulated by the members and approved by the Registrar.

The Accounts of the Society are audited annually by Chartered Accountants appointed by the Registrar Cooperative Societies / Deputy Commissioner, Islamabad.

Investment of the Members is fully protected through an elected Managing Committee of the Society which is committed to fast track transparent planning, decision making and their execution.



## *Office Automation*

MPCHS is maintaining computerized accounts and land records to make its performance efficient and transparent.

Website: [www.mpchs.com](http://www.mpchs.com) provided online access to information about the Society.

MPCHS members are also provided online facility to enable them to access their accounts information.

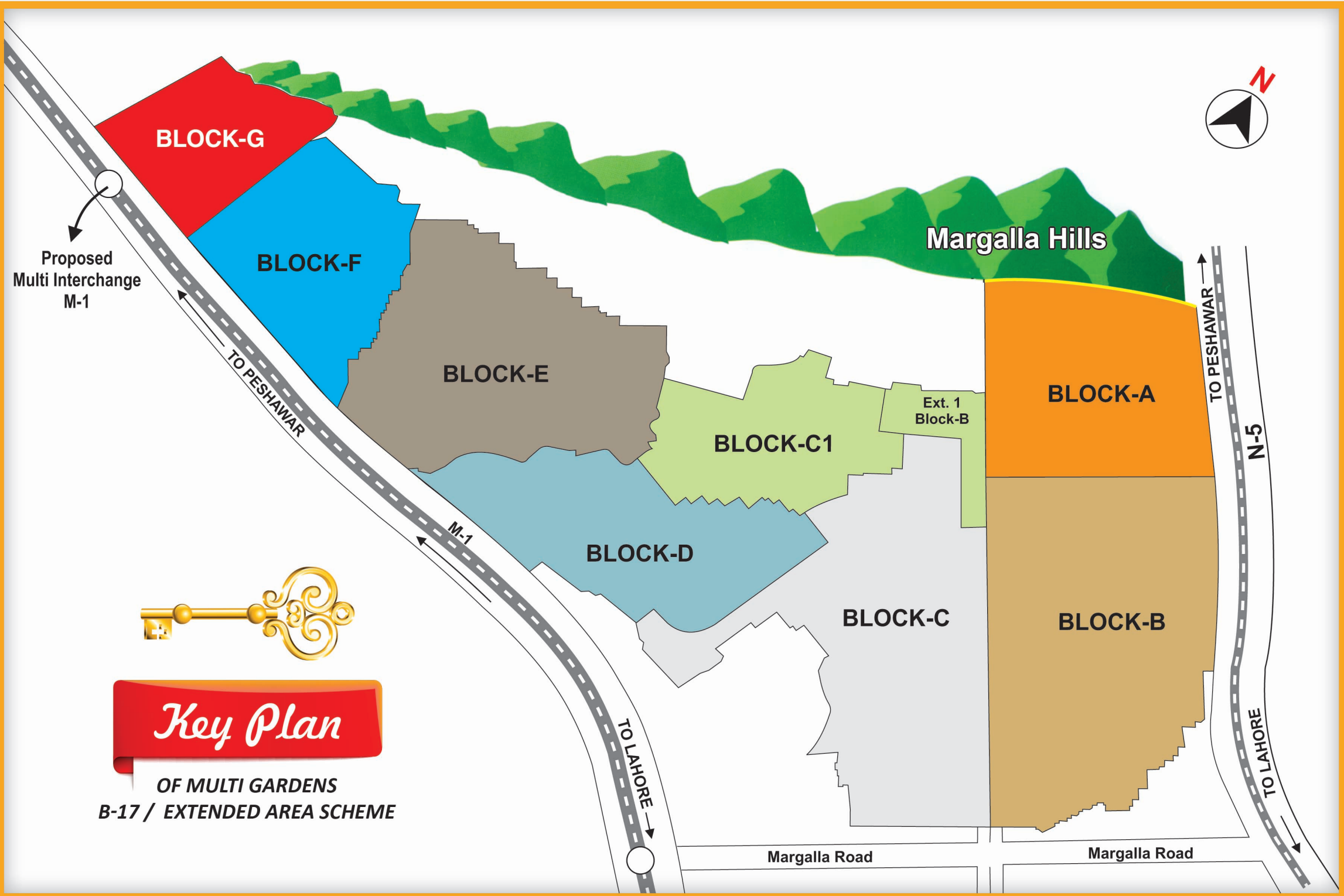
ISO 9001-2008 & ISO 1400/2004 Certification is self-evident to establish credibility of Society's Management and its projects.



# Managing Committee



Name	Designation & Contact	Name	Designation & Contact	Name	Designation & Contact
<b>Muhammad Aslam Rao</b> Former Secretary, National Book Foundation, Ministry of Education, Islamabad	<b>President</b> 0321-8549964	<b>Syed Mussadiq Shahid</b> Former SVP Allied Bank	<b>Finance Secretary</b> 0321-5103301	<b>Malik Rehan Mehmood Awan</b> (Retd) Colonel, Pak Army	<b>Executive Member</b> 0333-5168166
<b>Engr. Ch. Zafar Ali</b> Former Director General Pakistan Telecommunication Company Limited	<b>Vice President</b> 0321-5005777	<b>Kalsoom Rafiqu</b> Advocate High Court Islamabad Former Vice President, Islamabad Bar Council	<b>Information Secretary</b> 0333-5202563	<b>Muhammad Saleem</b> (Retd) Lt. Colonel, Pak Army	<b>Executive Member</b> 0321-5266373
<b>Ch. Nadeem Sarwar</b> General Secretary Industrial Engineer	<b>General Secretary</b> 0347-8673732	<b>Mohiuddin Mustafa</b> Agriculturist / Business	<b>Executive Member</b> 0300-8256070	<b>Amjad Ali Awan</b> Database Administrator MITS Solution	<b>Executive Member</b> 0321-5193903



**BLOCK-G**

**BLOCK-F**

**BLOCK-E**

**BLOCK-C1**

**BLOCK-D**

**BLOCK-C**

**BLOCK-A**

**BLOCK-B**

**Margalla Hills**

Ext. 1  
Block-B

Proposed  
Multi Interchange  
M-1

TO PESHAWAR

M-1

TO LAHORE

TO PESHAWAR

N-5

TO LAHORE

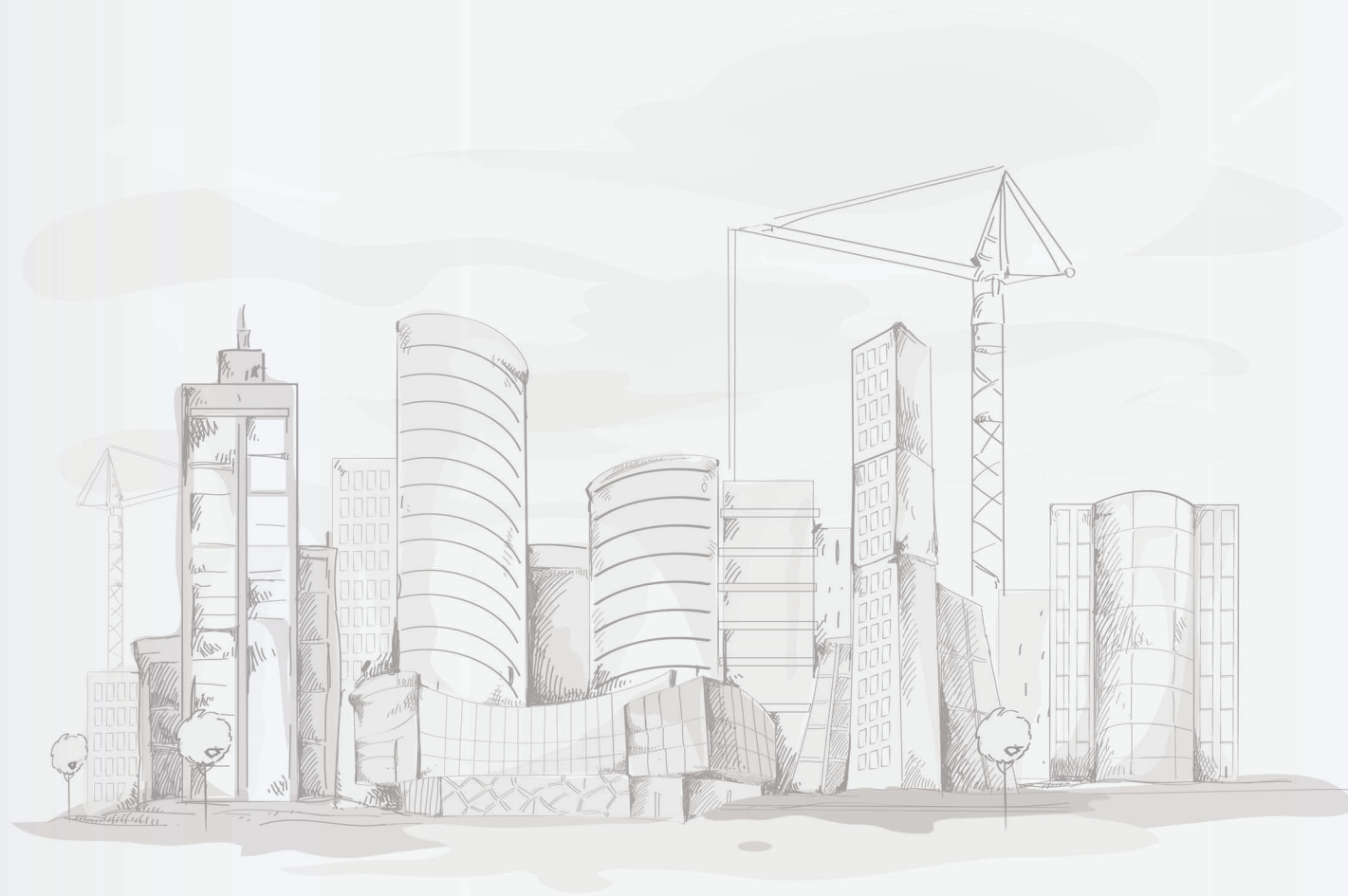
Margalla Road

Margalla Road



# Key Plan

OF MULTI GARDENS  
B-17 / EXTENDED AREA SCHEME



## **Multi Professionals Co-operative Housing Society (MPCHS)**

Multi Mansion, G-8 Markaz, Islamabad - Pakistan

Cell: 0300-5276817, 0332-5514842

UAN: 051-111 631 632 | Fax: 051-2850641

[www.mpchs.com](http://www.mpchs.com) | [info@mpchs.com](mailto:info@mpchs.com)